

DTU



Kurt S. Hansen & Nikola Vasiljević, DTU Wind Energy

**Rescuing legacy data from obsolescence:**

**The WindData.com user-case**

# Short CV - Kurt S. Hansen Emeritus (Senior Scientist)

- MSc. Mech Engineering (1977) DTH
- DTU Wind Energy
  - Working area: research & education
- 44 years of experience within wind energy
  - Initial projects: (large) proto wind turbines, design & testing.
  - – **Database on Wind Characteristics** & data analysis as part of research projects.
  - Flow analysis of onshore and offshore wind farms.



ORCID: [0000-0001-7109-3855](https://orcid.org/0000-0001-7109-3855)

# Introduction

- Research groups often possess a rich heritage of data spanning periods of several decades.
- As a consequence, the legacy data are typically unreadable and inaccessible due to obsolete formats and technologies in which they are provided.
- To prevent this from happening, DTU Wind Energy executed a pilot data rescue project and FAIRified the WindData.com data collection, moving it to a new technology stack.
- In this talk, we will present **process** and the **result** of this work.

# Outline

- Database on Wind Characteristics
  - Introduction to the legacy dataset;
  - Vision, technology & contents;
- Requirements for the new database
- Implementation
  - Structure & transfer process
  - Data documentation
  - Examples of access to data and documentation
- Status for the transfer
- Wrap-up

# Database on Wind Characteristics [objectives]

- Vast amounts of wind data from various locations

## Visions

The database should be useful as a supporting tool to identify:

- Rare meteorological events;
- Distributions of wind speed and turbulence (time & shear);
- Spatial structure of turbulence;
- **Interaction:** meteorology ↔ wind turbine
- Spacing parameters in wind farms.
- ....

These data was initiated in 1996.

# Database on Wind Characteristics

## – FAIR before FAIR acronym was defined

The procedure when receiving data included:

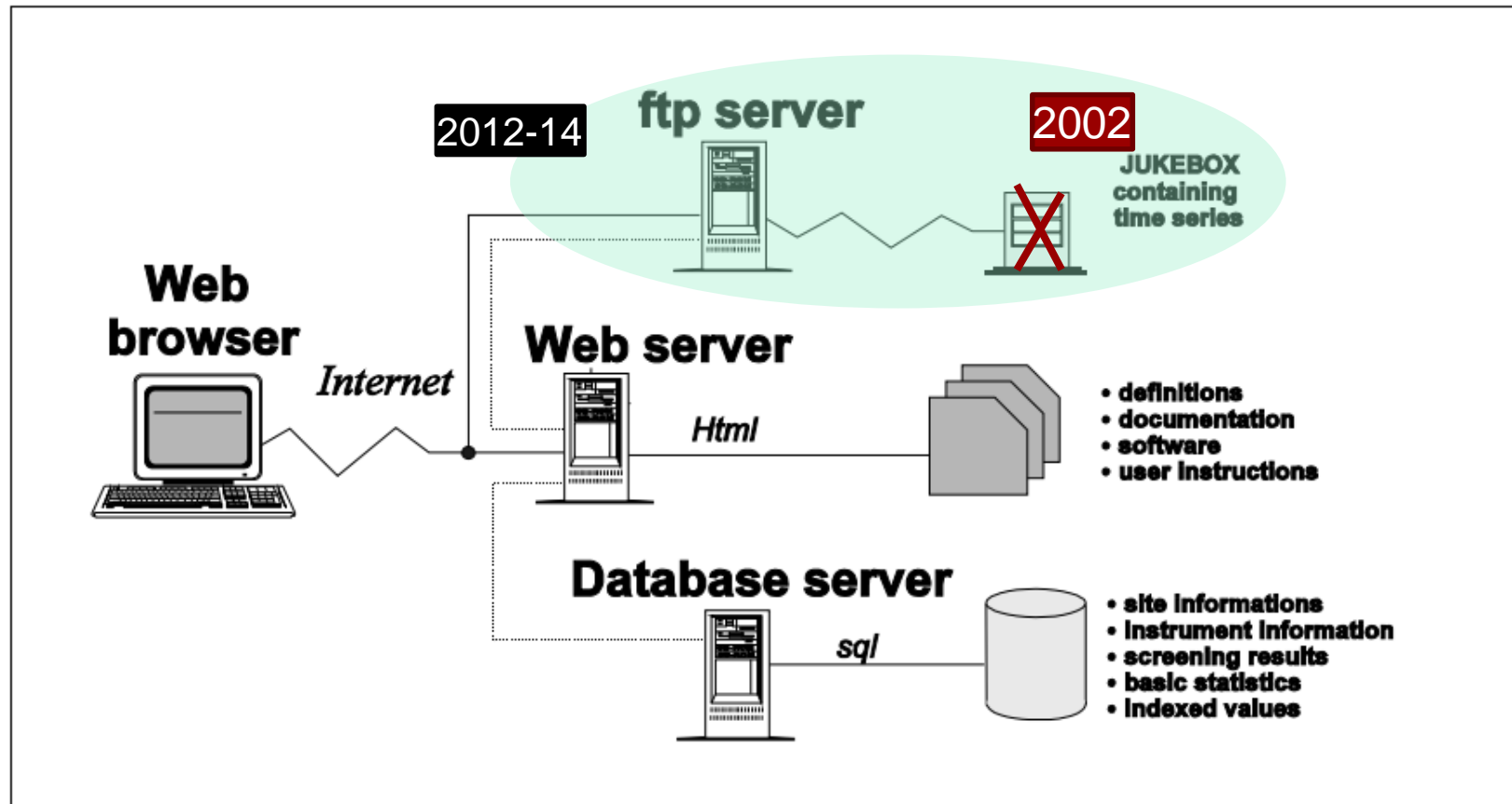
- Data conversion to a **standard format**.
- Screening for errors (=>quality index).
- Re-calculation of the statistics.
- Documentation of setup and instrumentation based on a **template**.

# Technology – initial [1996]

- *Database*
  - Borland Interbase => **MySQL**
    - User accounts (guest, users & administration)
    - Simple queries & advanced queries
- *Webserver*: MS IIS => **Apache**
- *Online queries*: **PHP**
  - FTP => **sFTP**
  - Online graphic tool
- **Challenges**
  - Updates & ethical hackers



# Structure of database server[s] in years 1996-2002

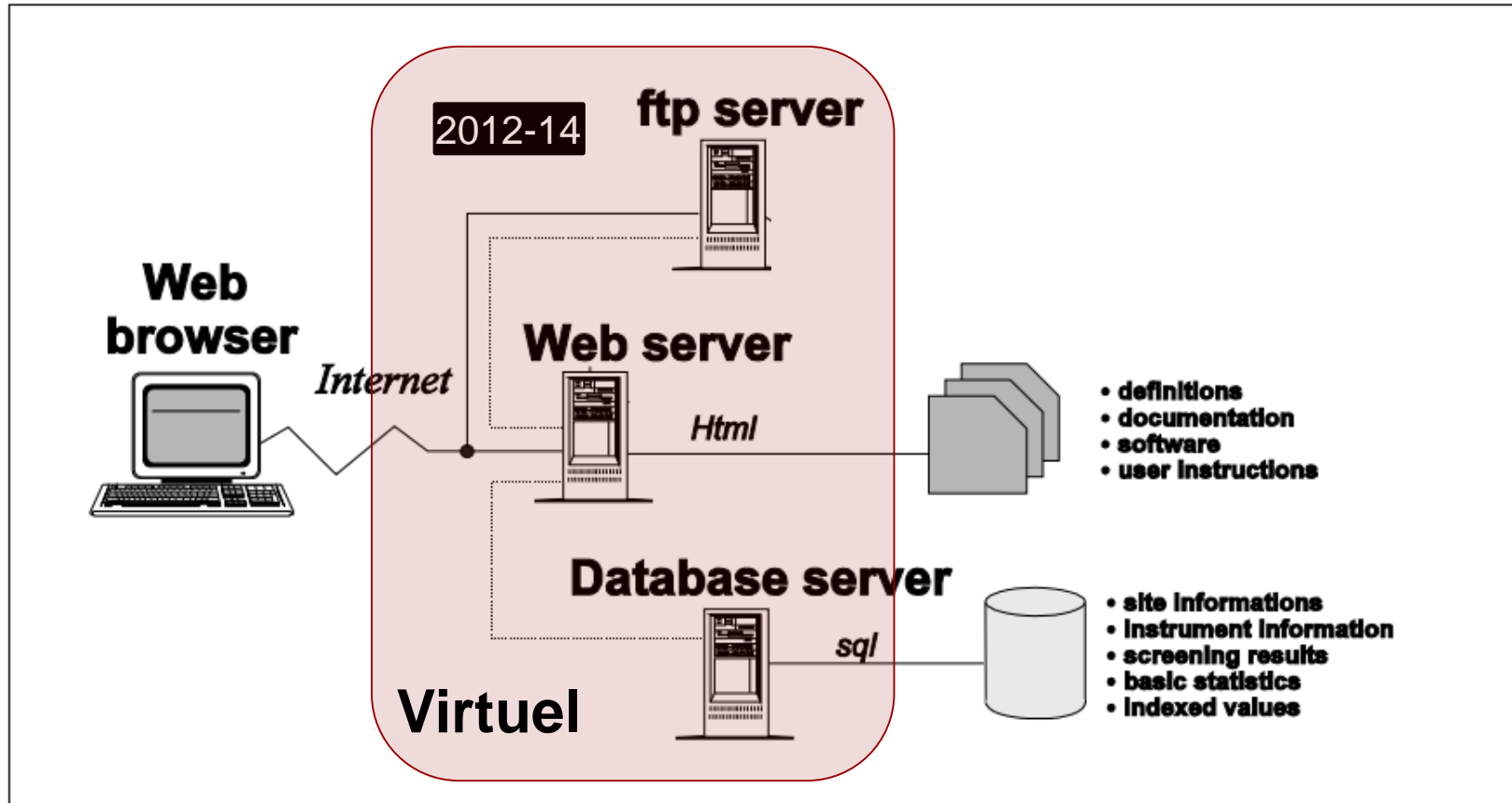


# Jukebox with 150 CD's



105 GB

# Structure of database server after 2014



# Database on Wind Characteristics [contents]

FTP server 109GB

- ***Time series of wind measurements***
  - Documentation
  - Statistics
  - Time series (1-40 Hz)
  - *Max. 62 sites*
  - *~ 196187 hours of measurements*
- ***Time series of wind turbine loads***
  - Documentation
  - Statistics
  - Time series (1-40 Hz)
  - 7 sites
  - *~ 6533 hours of measurements*
- ***Resource data (statistics)***
  - Documentation
  - Statistics
  - *Max. 49 sites*
  - *~ 1342132 hours of statistics*
- ***Wind farm data (SCADA; statistics)***
  - Documentation
  - Statistics
  - *2(3) sites*
  - *~ 19141 hours of statistics*

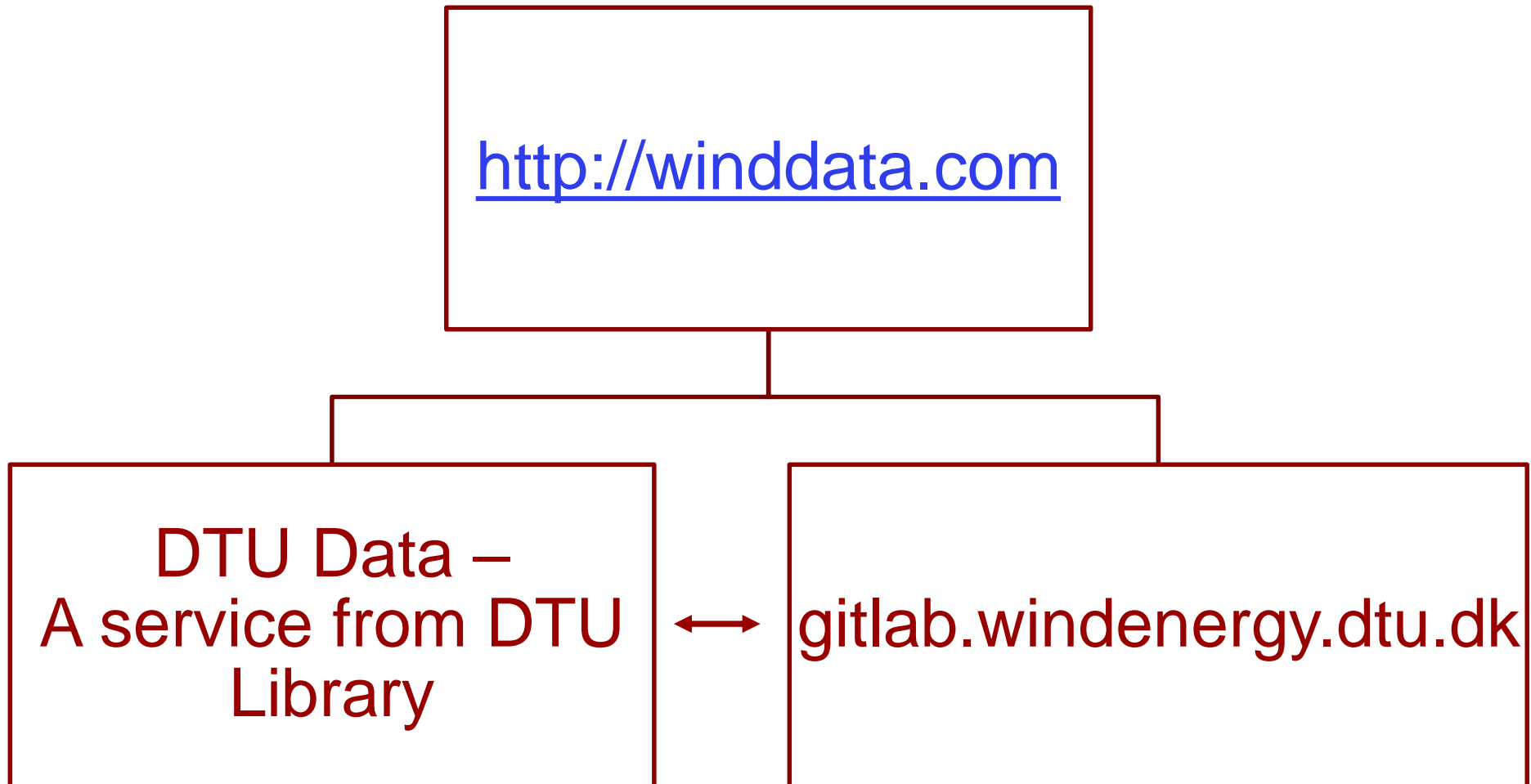
MYSQL: 16GB

> 100 sites

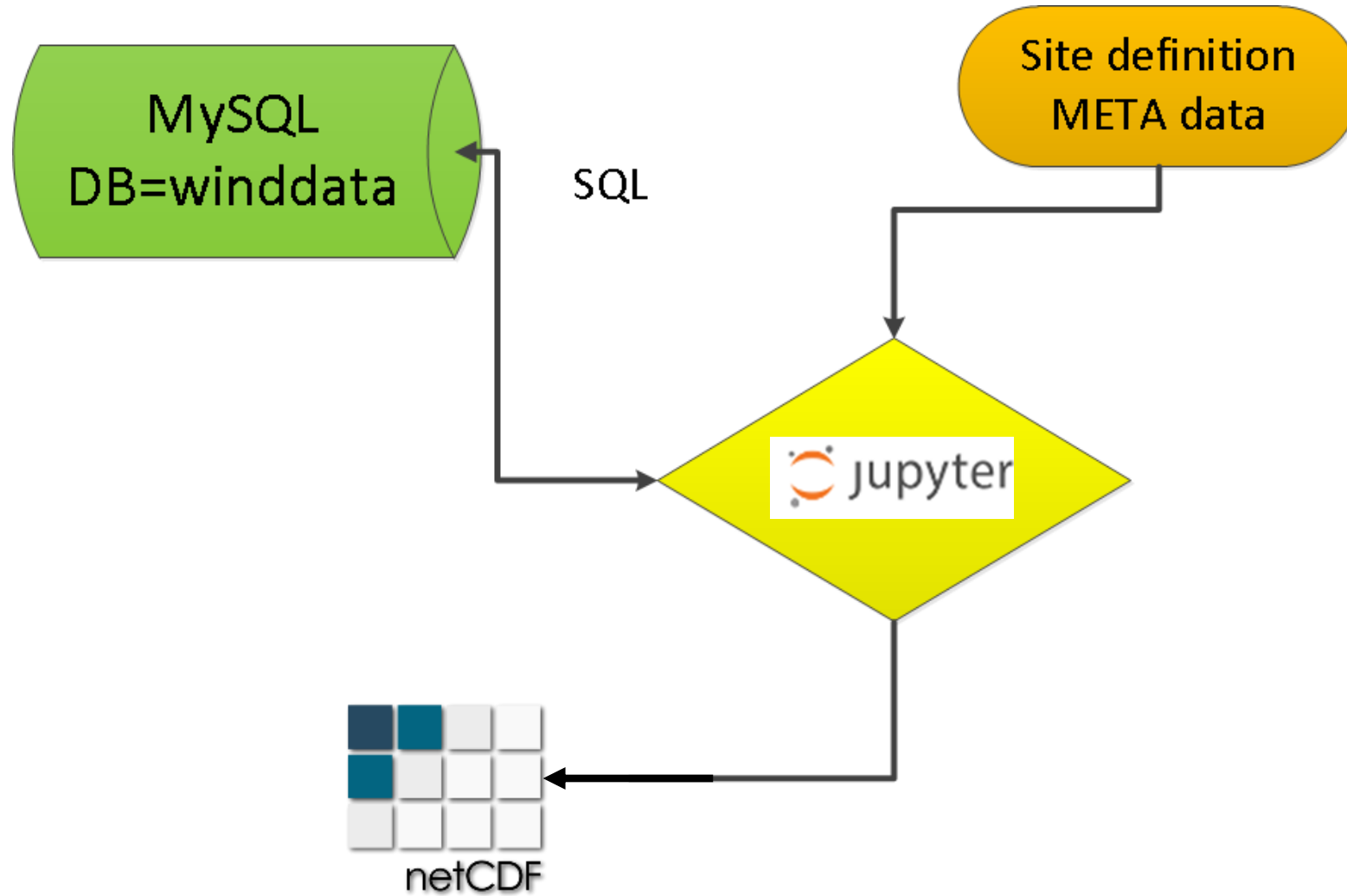
## *Requirements for new database*

- Data should be FAIR;
- Global and persistent findability, but also discovery through **winddata.com**, a solid brand for quality wind data;
- All data should have a clear accessible criteria;
- Data should be reusable through detailed documentation and by clear copyright information;
- Interoperable file formats should be used for the data;
- Easy citation of specific dataset;
- **Low maintenance.**

# New platform structure



# Data transfer process





## Resource data from the Godhavn met mast

[Cite](#) [Download all \(19.13 MB\)](#) [Share](#) [Embed](#) [+ Collect](#) [...](#)

Dataset posted on 15.04.2021, 10:44 by [Kurt Schaldemose Hansen](#), [Nikola Vasiljevic](#), [Steen Arne Sørensen](#)

This resource dataset consists of 10 minute wind speed and wind direction measurements from a small met mast at Qeqertarsuaq (Godhavn), Greenland. The period includes 10 years of measurements, which starts in 1991. Detailed documentation can be found [here](#).

### Data files:

- 1) Godhavn\_all.nc includes all periods
- 2) Godhavn\_concurrent.nc only includes concurrent periods for all channels.

### FUNDING

Internal

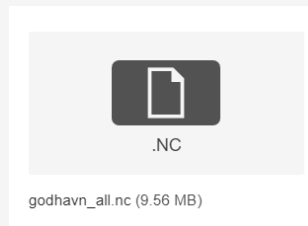
### HISTORY

- 14.04.2021 - Submission date
- 15.04.2021 - First online date, Posted date

### REFERENCES

- <http://doi.org/10.5281/zenodo.4580574>
- <http://doi.org/10.5281/zenodo.4580722>
- <https://gitlab.windenergy.dtu.dk/fair-data/winddata-revamp/winddata-documentation/-/blob/master/godhavn.md>

**DTU Data**  
Ex. site=Godhavn



### LOCATION

Latitude: 69.250833, Longitude: -53.513611

### DATE

Start date: 1994-06-01 Stop date: 2002-07-14

### TOPIC

- Siting;>Wind Mapping
- Siting;>Design conditions;>Extreme wind

### MODELS

- Not applicable

### ACTIVITIES

- Measurements;>Field experiment

### EXTERNAL CONDITIONS

- Location;>Offshore;>Nearshore
- Terrain type;>Flat

### DATA CATEGORY

- Meteorological data

Wind Energy Topics  
<http://purl.org/neat>

Wind Energy Activities  
<http://purl.org/weave>

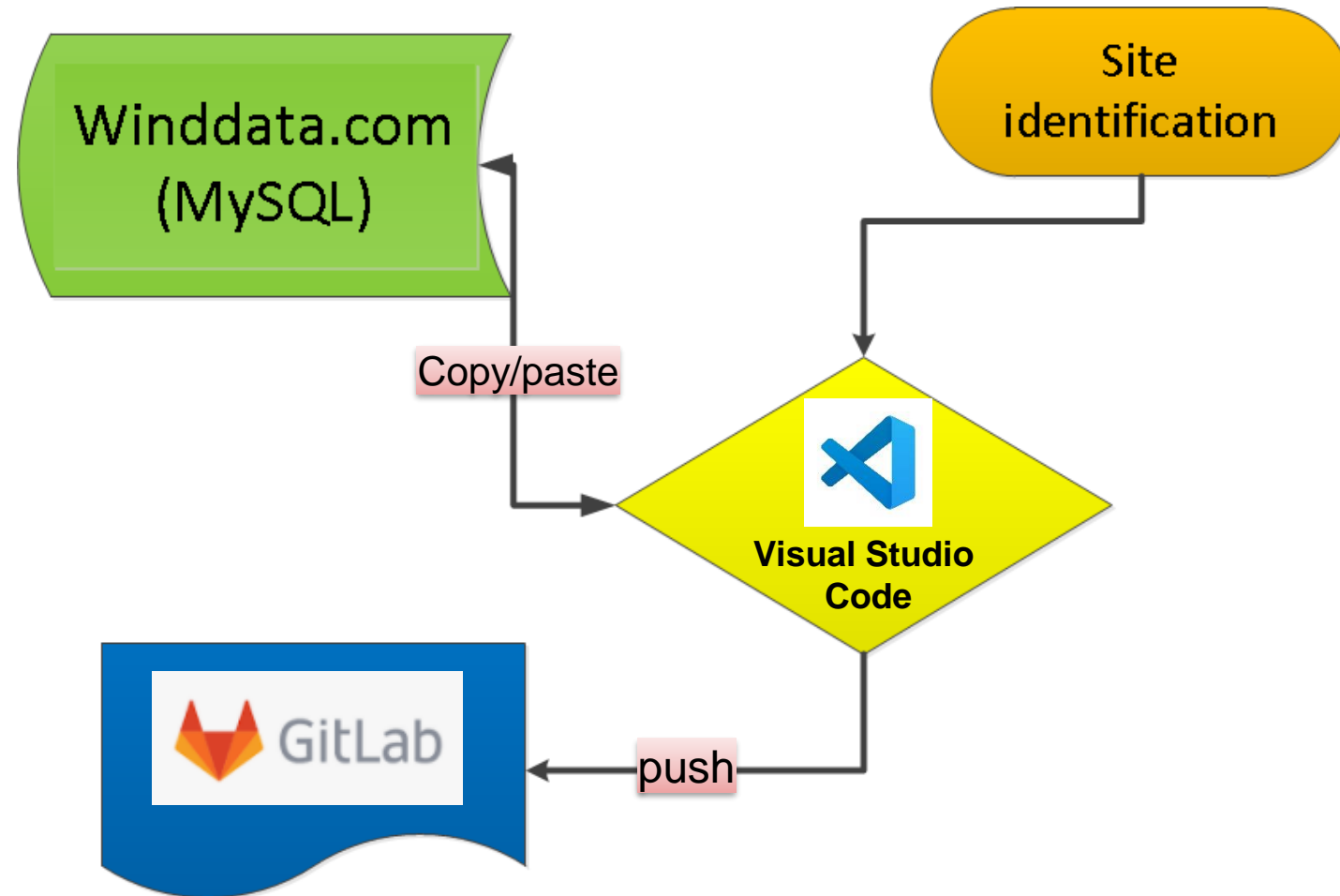
External Conditions Taxonomy  
<http://purl.org/extract>

[data.dtu.dk](http://data.dtu.dk)  
[Download all](#)

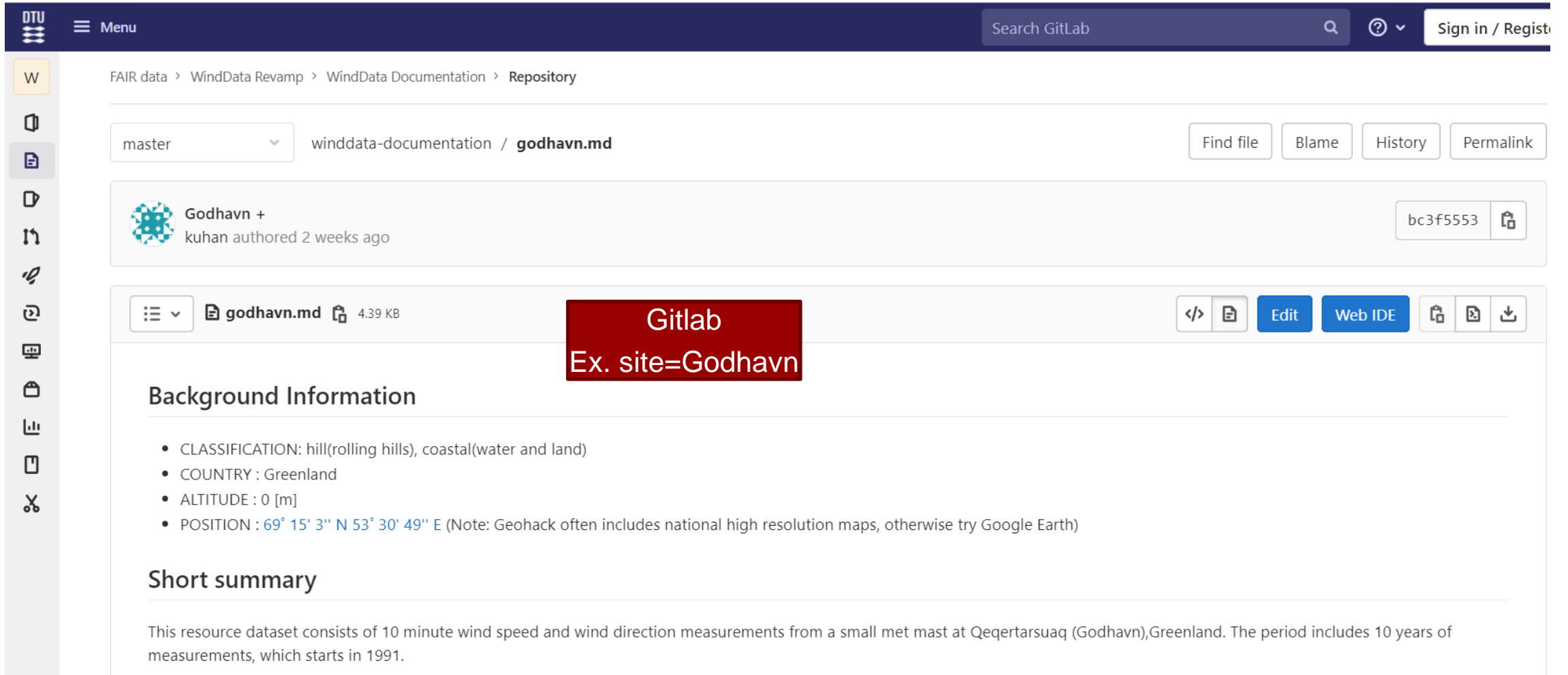
[gitlab.windenergy.dtu.dk](https://gitlab.windenergy.dtu.dk)  
[Documentation](#)



# Documentation process



# https://gitlab.windenergy.dtu.dk godhavn.md




The screenshot shows a GitLab repository page for the file 'godhavn.md'. The page is part of the 'winddata-documentation' repository on the 'master' branch. A commit by 'kuhan' is shown, dated 2 weeks ago. The file 'godhavn.md' is 4.39 KB in size. A red box highlights the text 'Gitlab Ex. site=Godhavn'. Below this, the 'Background Information' section lists details about the location: CLASSIFICATION: hill(rolling hills), coastal(water and land); COUNTRY: Greenland; ALTITUDE: 0 [m]; POSITION: 69° 15' 3" N 53° 30' 49" E. A 'Short summary' section follows, stating that the dataset consists of 10-minute wind speed and direction measurements from a met mast at Qeqertarsuaq (Godhavn), Greenland, starting in 1991.

DTU Menu Search GitLab Sign in / Register

FAIR data > WindData Revamp > WindData Documentation > Repository

master winddata-documentation / **godhavn.md** Find file Blame History Permalink

 **Godhavn +** kuhan authored 2 weeks ago bc3f5553

godhavn.md 4.39 KB **Gitlab** Edit Web IDE

**Ex. site=Godhavn**

### Background Information

- CLASSIFICATION: hill(rolling hills), coastal(water and land)
- COUNTRY : Greenland
- ALTITUDE : 0 [m]
- POSITION : 69° 15' 3" N 53° 30' 49" E (Note: Geohack often includes national high resolution maps, otherwise try Google Earth)

### Short summary

This resource dataset consists of 10 minute wind speed and wind direction measurements from a small met mast at Qeqertarsuaq (Godhavn),Greenland. The period includes 10 years of measurements, which starts in 1991.

<https://gitlab.windenergy.dtu.dk/> => **godhavn.md**

SCROLLED TO BOTTOM

## ACKNOWLEDGMENTS

- Acknowledgement : Niels Nielsen, Institute of Geography, University of Copenhagen.
- E-mail: [nn@geogr.ku.dk](mailto:nn@geogr.ku.dk)
- INSTITUTION : Institute of Geography, University of Copenhagen
- ADDRESS : Øster Voldgade 10, DK-1350 Copenhagen K
- TEL/FAX : Ole Humlum / N.Nielsen
- CONTACTS : Niels Nielsen
- LINKS : <http://www.geogr.ku.dk/>
- COLLABS : Copenhagen University
- FUND AGENTS : Internal
- PERIOD : 1991-2001
- Naming\_authority : 'DTU Data'
- DOI : '<https://doi.org/10.11583/DTU.14153240>'

Gitlab  
Ex. Godhavn

DOI to  
DTU Data:  
Godhavn

## Public data

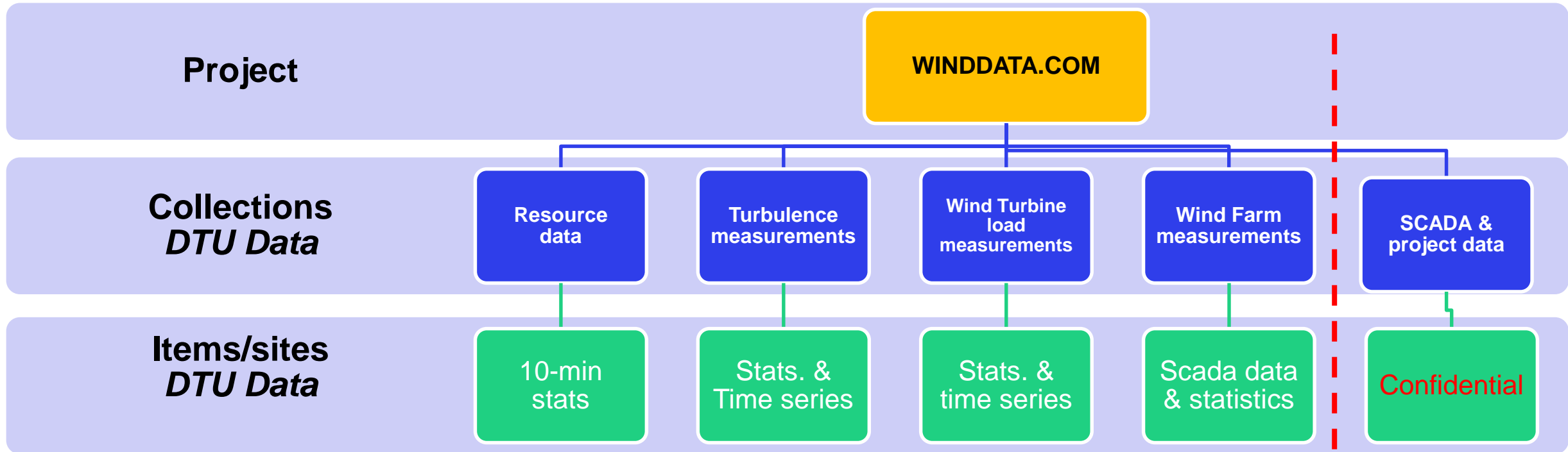
1. Resource data (NetCDF)

# DTU Data structure

Terminology:  
1) Item = site  
2) Collection = group of items

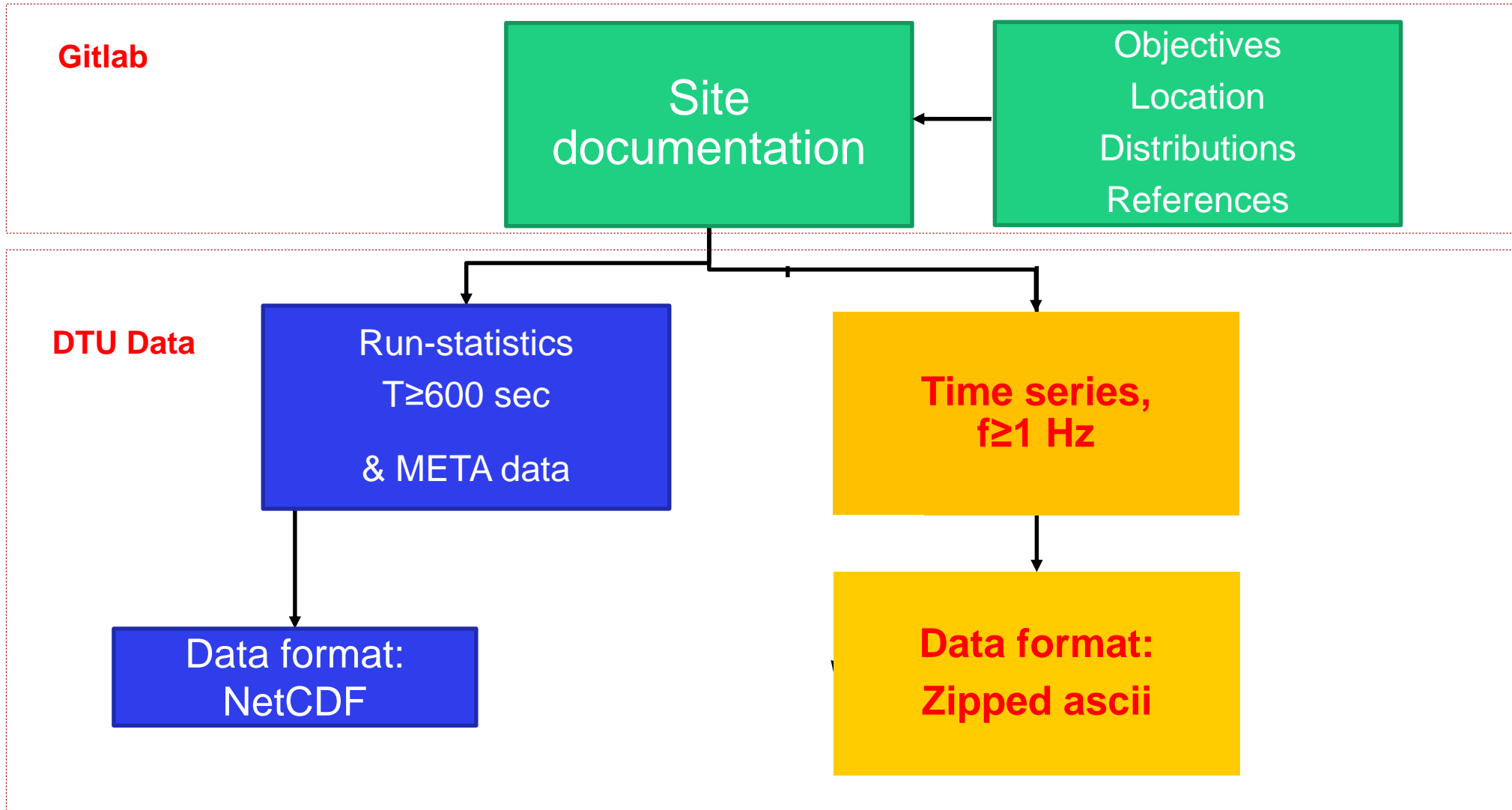


# DTU Data: Database on Wind Characteristics



Documentation is located on: *Gitlab/Fair data/Winddata Rewamp/*

# Documentation of *Time series of measurements*



## Status for winddata.com on DTU Data

- Collection of wind resource data finalized 😊
- Collection of time series of wind measurements (>85%)
- Time series of structural loads (66%)
- Wind farm data (33%)
- Internal SCADA & Project data - overview 😊

# Database on Wind Characteristics

## Wrap-up

- Five data collections have been defined
  - Wind resource; time series and SCADA data.
- Major part of winddata.com including documentation has been transferred.
- Metadata of both statistical and raw time series are publicly accessible.
- A platform for future publication of wind energy related dataset has been established.



# Thanks for your attention

## Questions?

